



Iva Place
Kirkland

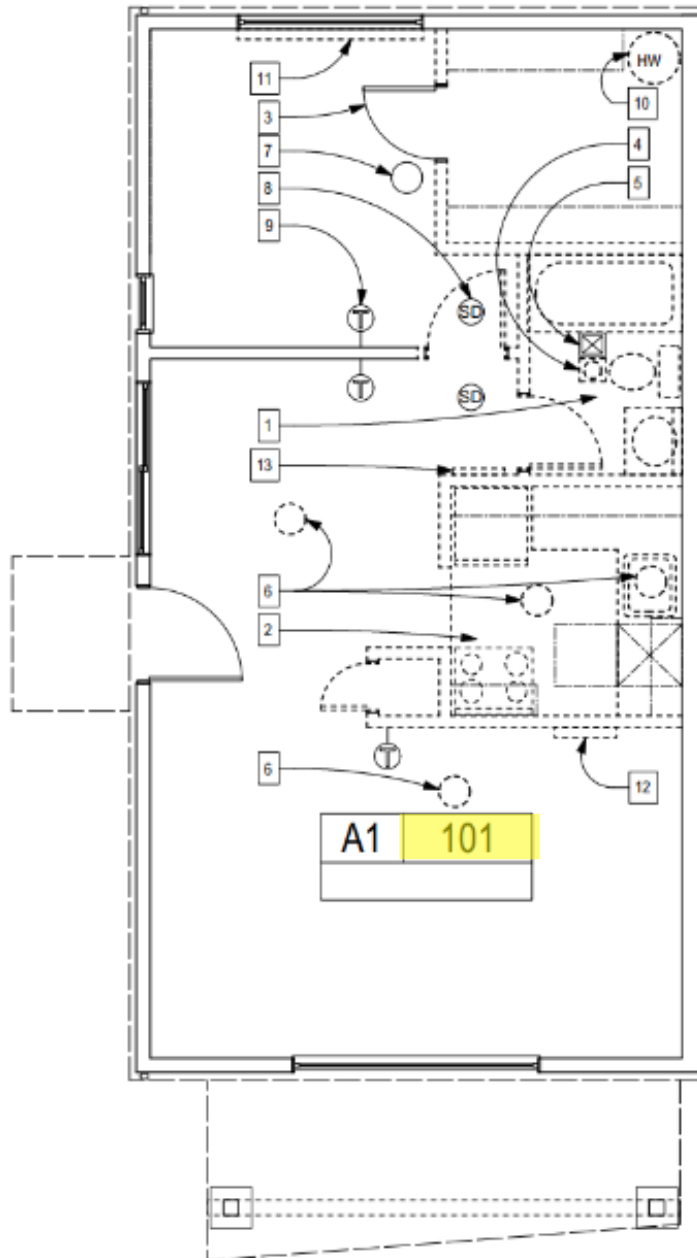
11005 NE 68th St, Kirkland, WA 98033

New Young Adult Affordable Housing Property

- Affordable housing community for income-qualified young adults, aged 18-24
- Below market rent; units available for those earning at or below between 30-50% Area Median Income (AMI)
- Located near Houghton Center and public transit, with just a short drive to Lake Washington Institute of Technology
- 15 units: 14 units share furnished living areas, including kitchen, living space, and bathroom(s)
- Modern, bright floor plans
- Energy efficient apartment building
- Utilities and Wi-Fi included
- On-site parking is available on a limited basis



For more information, email leasing@ivaplacekirkland.com.



Unit 101

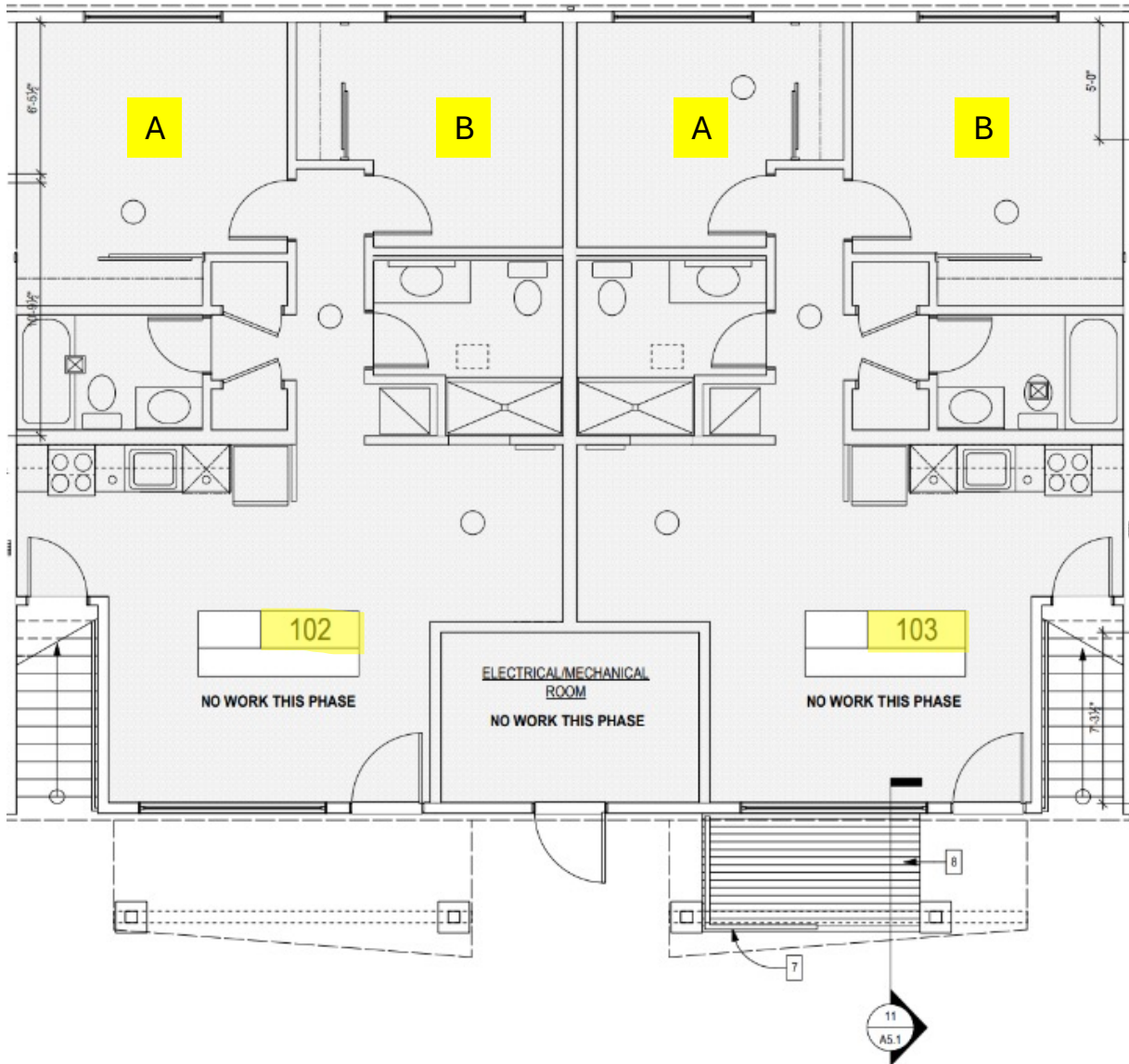
1 Bedroom, 1 Bath Unit, 1st Floor

- ADA friendly
- Preference will be given to applicants with accessibility needs

Rent: \$1,411 / month including utilities & Wi-Fi

Maximum Annual Income = 50% AMI
(\$52,700 if 1 person or \$60,250 if 2 persons)
Minimum Monthly Income = 2X rent
(\$2,822)

Updated July 23, 2024



Apartments 102 & 103

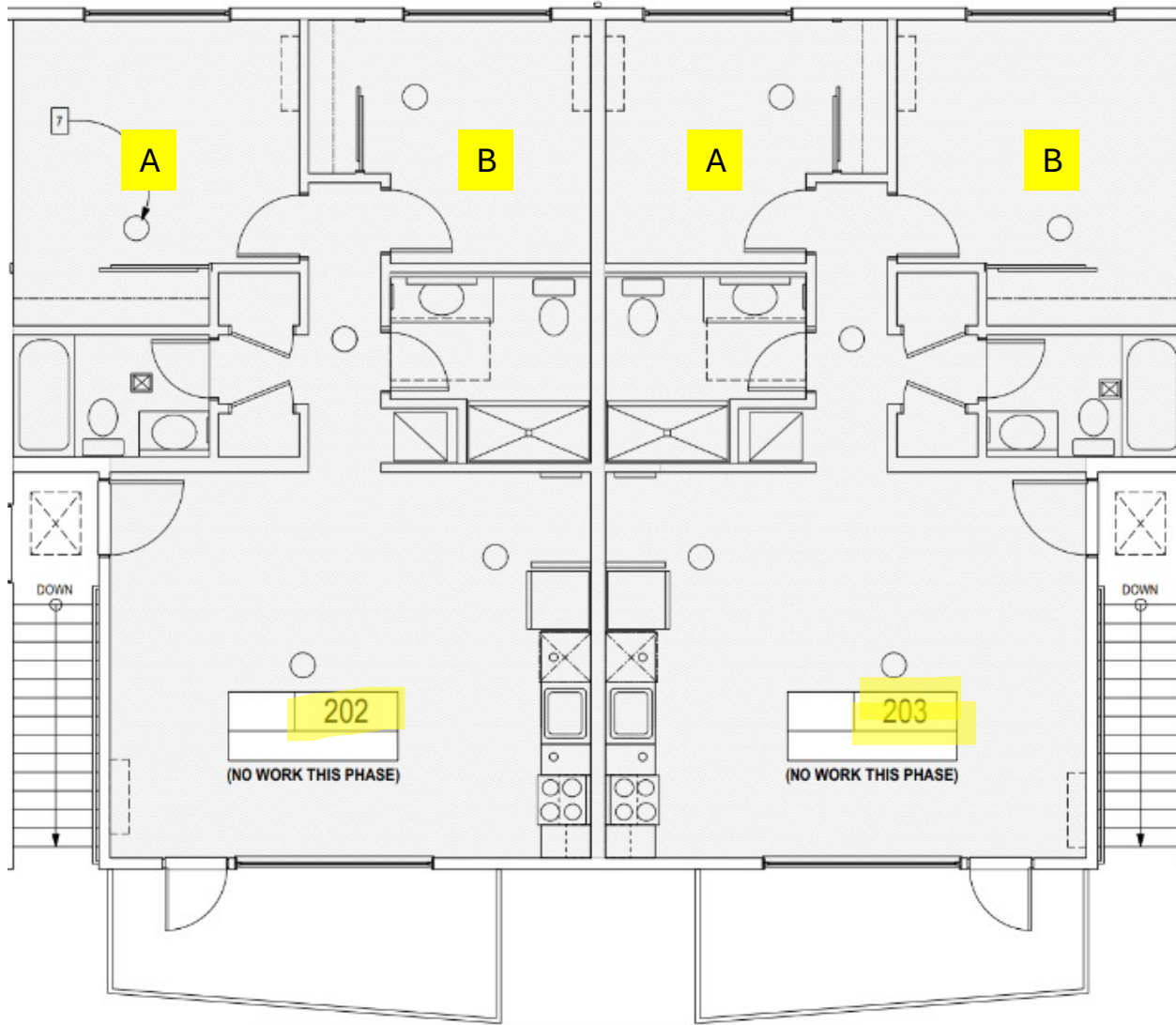
Units 102A, 102B, 103A, 103B
 2 Bedroom, 2 Bath, 1st Floor,
 Middle Apartments

Rent: \$852 / month per bedroom unit + shared living space (living room & kitchen). Includes utilities & Wi-Fi.

Maximum Annual Income = 35% AMI
 (\$36,890)

Minimum Monthly Income = 2X rent
 (\$1,704)

Updated July 23, 2024



Apartments 202 & 203

Units 202A, 202B, 203A, 203B

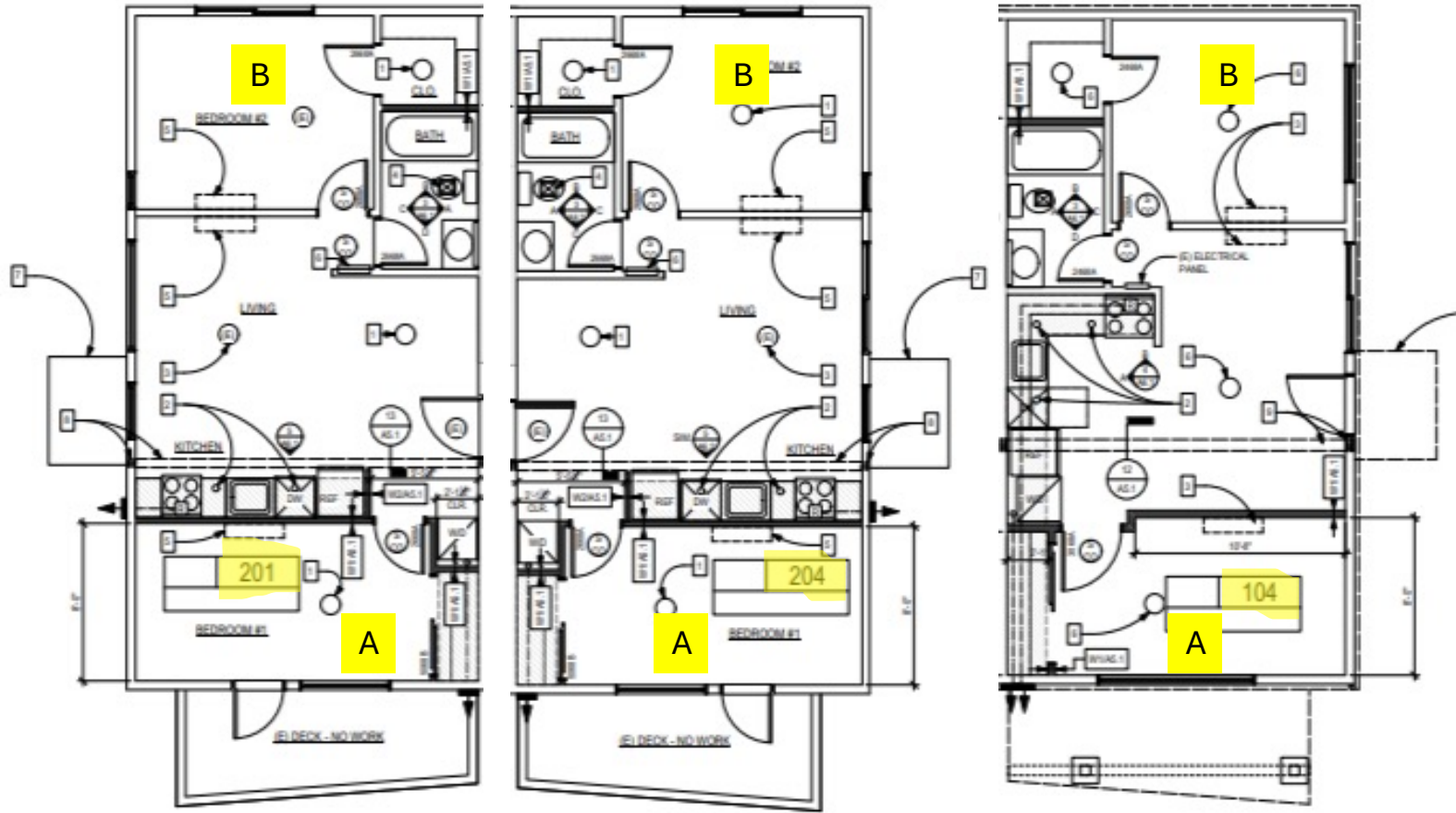
2 Bedroom, 2 Bath, 2nd Floor, Middle Apartments

Rent: \$852 / month per bedroom unit + shared living space (living room & kitchen). Includes utilities & Wi-Fi.

Maximum Annual Income = 35% AMI
(\$36,890)

Minimum Monthly Income = 2X rent
(\$1,704)

Updated July 23, 2024



Apartments 104, 201 & 204

Units 104A, 104B, 201A, 201B, 204A, 204B

2 Bedroom, 1 Bath Units, 1st & 2nd Floor

Rent: \$740 / month per bedroom unit + shared living space (living room & kitchen). Includes utilities & Wi-Fi.

Maximum Annual Income = 30% AMI (\$31,650)

Minimum Monthly Income = 2X rent (\$1,480)